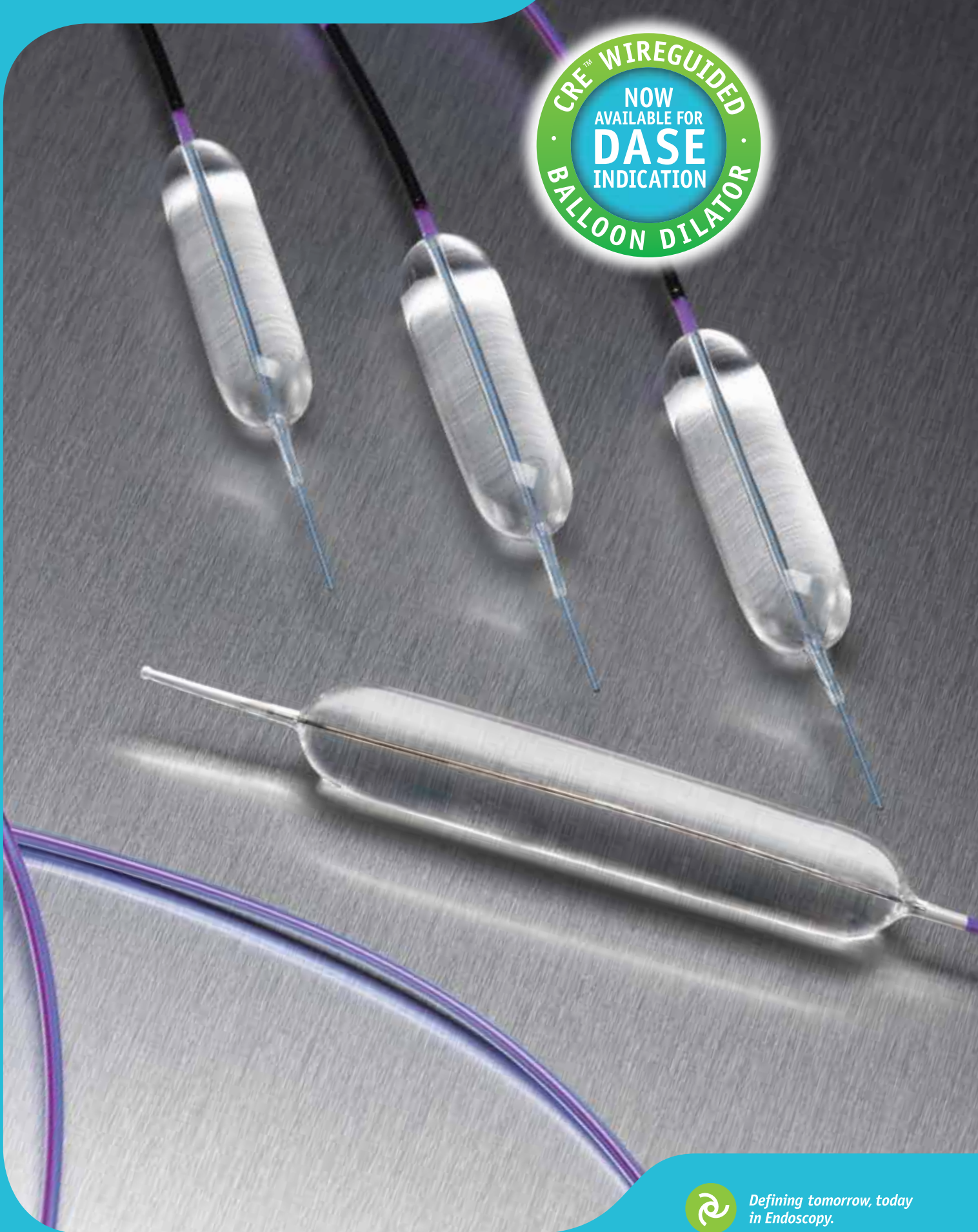


CRE™ Balloon Dilator

Boston
Scientific



Defining tomorrow, today
in Endoscopy.

CRE™ Balloon Dilator

CRE™ Fixed and Wireguided Balloon Dilators: proven excellence with **Balloon Endoscopy** for exceptional Control, Efficiency and Technology

CONTROL

- Designed to produce three distinct diameters at three separate pressures during *in vivo* dilation



CRE inflated to 12mm



CRE inflated to 13.5mm



CRE inflated to 15mm

Clinical images courtesy of A. Kruse, MD - Aarhus University Hospital, Denmark

EFFICIENCY

- High pressure balloon is designed to produce little or no balloon waisting
- Engineered for rapid deflation
- Facilitate placement within tight strictures and tortuous anatomy*

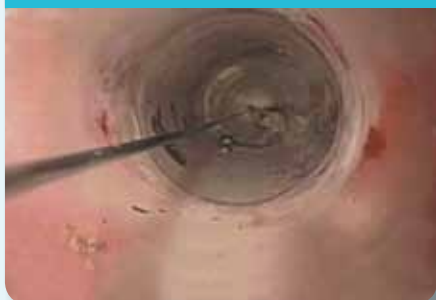
**Wireguided only*

TECHNOLOGY

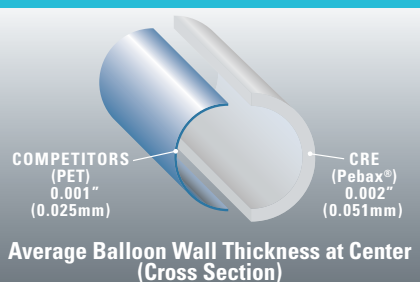
- Rounded shoulders designed to facilitate visualization of stricture, or Balloon Endoscopy, while dilating

- Proprietary manufacturing process using Pebax® material

THROUGH-THE-BALLOON VIEW OF DILATION AND TISSUE RESPONSE



MATERIAL + BALLOON WALL THICKNESS = PERFORMANCE



*Sources: Bench test data
Data on file Boston Scientific Corp.*



Dilation Assisted Stone Extraction (DASE) for removal of difficult biliary stones

First Balloon Dilator available for DASE indication.

“Large balloon dilation of the ampulla or DASE is a valuable technique to facilitate the extraction of difficult to manage choledocholithiasis. It is an easy and safe procedure that needs to be considered in the case of large common bile duct stones and when conventional stone extraction fails or in challenging situations with anatomical aberrations including a BII stomach. When used appropriately it has the potential to reduce the number of cumbersome and costly re-interventions.”

PROF. MARCO BRUNO Erasmus Medical Center, Rotterdam, The Netherlands

“While managing large bile duct stones, DASE by CRE balloons have really revolutionized our results in terms of increased success, lesser use of lithotripsy & reduced complications.”

DR. MAHESH GOENKA Apollo Gleneagles Hospital, Kolkata, India

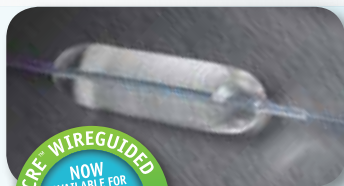
“Large balloon dilation of the ampulla or DASE is a breakthrough in ERCP endoscopic techniques that facilitates the management of large bile duct stones not amenable to routine extraction manoeuvres. It allows the safe and simple removal of single or multiple large bile duct stones, decreasing in many cases, the need for intracorporeal lithotripsy. In our experience, here in Canada, it also allows the same-session clearance of a duct that would otherwise often require multiple ERCPs. Because the DASE procedure makes use of routine endoscopic principles and readily available equipment, such as the Wire Guided CRE Balloon, it is a technique that all biliary endoscopists should become familiar with.”

DR. ALAN BARKUN McGill University Health Centre, Montreal, Canada



Clinical images courtesy of Oleh Haluszka, MD - Fox Chase Cancer Center, Philadelphia, Pennsylvania, USA

CRE™ Balloon Dilator



CRE™ WIREGUIDED
NOW
AVAILABLE FOR
DASE
INDICATION
BALLOON DILATOR

CRE™ SINGLE-USE WIREGUIDED BALLOON DILATORS

Order Number	Inflated O.D. (mm)	Balloon Length (cm)	Inflation Pressures (ATM)	Inflation Pressures (kPa)	Minimum Working Channel (mm)	Catheter Diameter (F) / (mm)	Working Length (cm)
Esophageal, Pyloric & Biliary							
M00558600	6-7-8	5.5	3-6-10	304-608-1013	2.8 (A)/3.2 (B)	7.5 / 2.50	180
M00558610	8-9-10	5.5	3-5-9	304-557-912	2.8 (A)/3.2 (B)	7.5 / 2.50	180
M00558620	10-11-12	5.5	3-5-8	304-507-811	2.8 (A)/3.2 (B)	7.5 / 2.50	180
M00558630	12-13.5-15	5.5	3-4.5-8	304-456-811	2.8 (A)/3.2 (B)	7.5 / 2.50	180
M00558640	15-16.5-18	5.5	3-4.5-7	304-456-709	2.8 / 3.2 (A)/4.2 (B)*	7.5 / 2.50	180
M00558650**	18-19-20	5.5	3-4.5-6	304-456-608	2.8 / 3.2 (A)/4.2 (B)*	7.5 / 2.50	180
Esophageal, Pyloric, Colonic & Biliary							
M00558660	6-7-8	5.5	3-6-10	304-608-1013	2.8 / 3.2 (A)/3.2 (B)*	7.5 / 2.50	240
M00558670	8-9-10	5.5	3-5.5-9	304-557-912	2.8 / 3.2 (A)/3.2 (B)*	7.5 / 2.50	240
M00558680	10-11-12	5.5	3-5-8	304-507-811	2.8 / 3.2 (A)/3.2 (B)*	7.5 / 2.50	240
M00558690	12-13.5-15	5.5	3-4.5-8	304-456-811	2.8 / 3.2 (A)/3.2 (B)*	7.5 / 2.50	240
M00558700	15-16.5-18	5.5	3-4.5-7	304-456-709	2.8 / 3.2 (A)/4.2 (B)*	7.5 / 2.50	240
M00558710***	18-19-20	5.5	3-4.5-6	304-456-608	2.8 / 3.2 (A)/4.2 (B)*	7.5 / 2.50	240

* Requires a 2.8mm Olympus brand Endoscope channel or a 3.2mm Pentax or Fujinon brand Endoscope channel for alimentary tract

Esophageal application only *Esophageal and colonic application only (A) = Alimentary tract (B) = Biliary tract

Please check availability of the product with your local sales representative or your local customer service.



CRE™ SINGLE-USE FIXED WIRE BALLOON DILATORS

Order Number	Inflated O.D. (mm)	Balloon Length (cm)	Inflation Pressures (ATM)	Inflation Pressures (kPa)	Minimum Working Channel (mm)	Catheter Diameter (F) / (mm)	Working Length (cm)
M00558330	6-7-8	8	3-6-10	304-608-1013	2.8	6 / 2.00	180
M00558340	8-9-10	8	3-5.5-9	304-557-912	2.8	6 / 2.00	180
M00558350	10-11-12	8	3-5-8	304-507-810	2.8	6 / 2.00	180
M00558360	12-13.5-15	8	3-4.5-8	304-456-810	2.8	6 / 2.00	180
M00558370	15-16.5-18	8	3-4.5-7	304-456-709	2.8	6 / 2.00	180
M00558380	18-19-20	8	3-4.5-6	304-456-608	2.8	6 / 2.00	180

These products contain no detectable latex.



INFLATION SYSTEM

Order Number	Description
M00550620	Alliance™ II Inflation Handle
M00550601*	Alliance II 60ml Single-Use Syringe/Gauge Assembly

*Box 5



To learn more about CRE™ Balloon Dilator, go on: www.youtube.com/bostonscientificendo
Or use your smart phone to scan this code.

Boston Scientific

Defining tomorrow, today.™

www.bostonscientific-international.com

Pebax® is a registered trademark of Arkema France Corporation. All cited trademarks are the property of their respective owners.
CAUTION: The law restricts these devices to sale by or on the order of a physician. Indications, contraindications, warnings and instructions for use can be found in the product labelling supplied with each device. Information for the use only in countries with applicable health authority product registrations.

PSST 6720. Printed in The Netherlands by DeBudelse/creativeservices.

© 2011 Boston Scientific Corporation or its affiliates. All rights reserved.
DINEND2284EA